

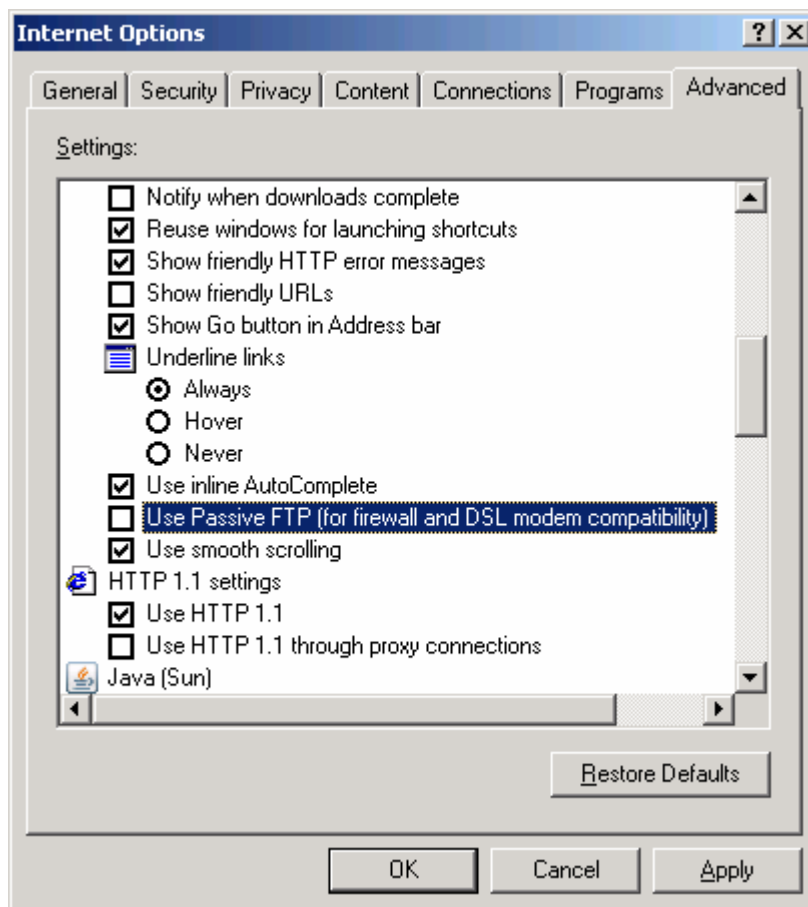


Settings for using the iunctus FTP Site (ftp://ftp.terraengine.com)

When downloading imagery from the iunctus FTP site, it is important that your FTP client uses active FTP only. Below are the settings for Internet Explorer or Filezilla you can use in order to insure correct downloads from the iunctus FTP server. If you want to use another client, but don't know how to configure it, please contact us, and we would be happy to help you.

Configuring Internet Explorer

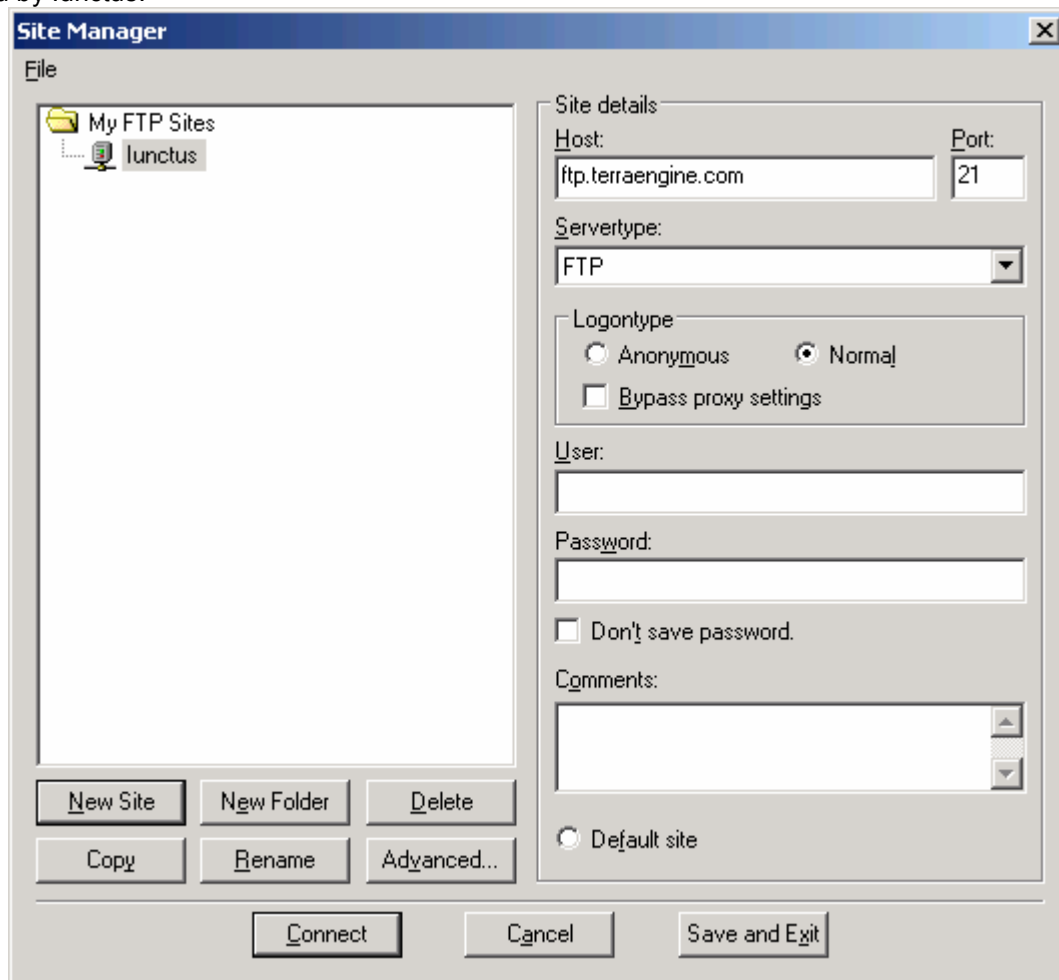
1. Click on Tools and then Internet Options
2. Click on the Advanced tab
3. About 1/3 down the list of options, you see "Use Passive FTP". Make sure this setting is checked off:



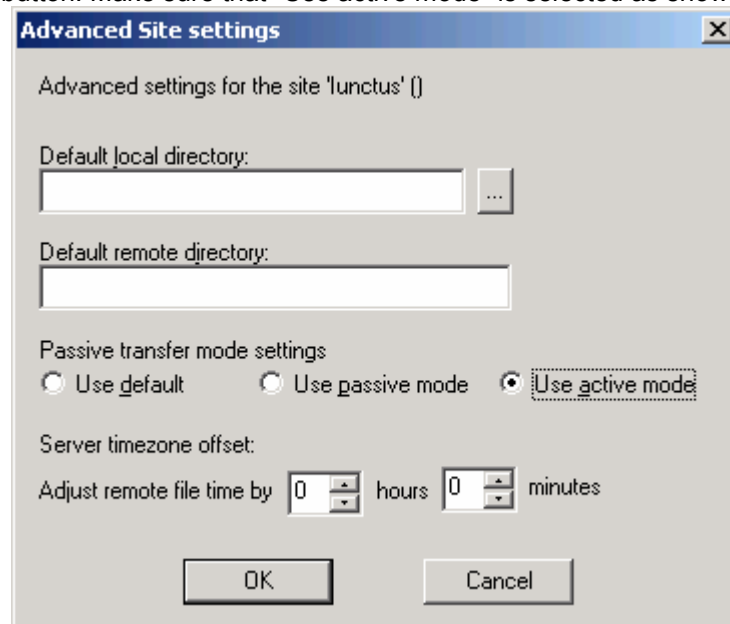
Configuring Filezilla

Filezilla is a free, easy to use FTP client. We recommend using an FTP client when downloading large amounts of data. Other FTP clients can be easily configured similarly to Filezilla.

1. In Filezilla, click on File and then Site Manager
2. Click the button New Site
3. Fill in the information as shown below. In the User and Password fields, you will put your userID and password that has been given to you by lunctus.



4. Now, click on the Advanced button. Make sure that "Use active mode" is selected as shown below:



5. You can now click on Ok to confirm the Advanced Site settings, and you are ready to download data.

